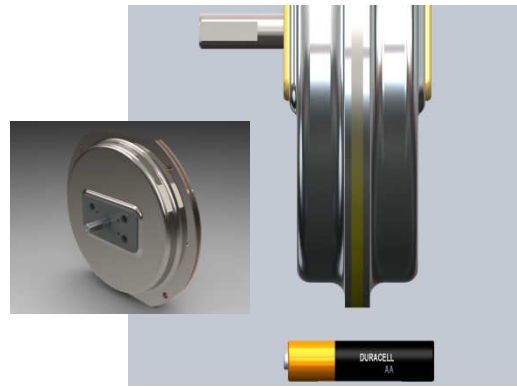


GSR-16FD-LR

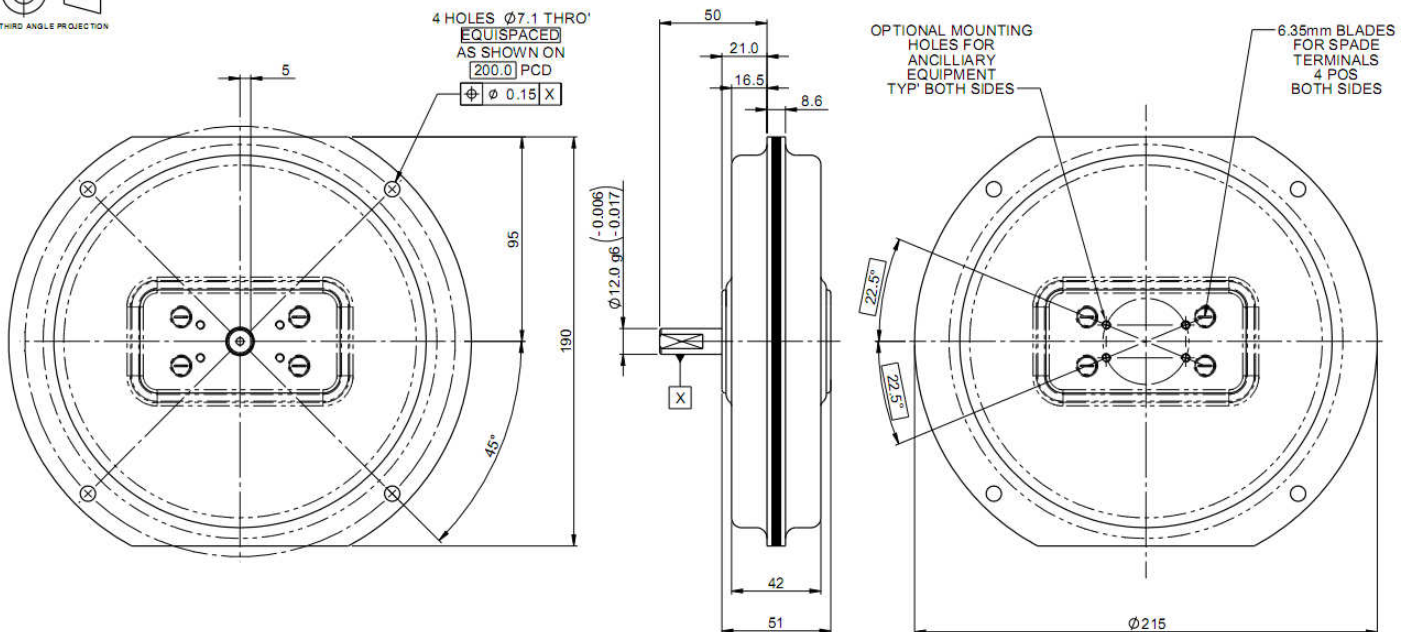
Peak Torque **2000 Ncm**
 Cont. Torque **200 Ncm**
 Cont. Power **800 Watts**
 Speed **<1 to 6000 rpm**

The Printed Motor Works *GSR-16FD-LR* is a totally enclosed dc motor in an ultra slim true pancake profile. With twin printed motors in a package only 51mm thick the *GSR-16FD-LR* provides up to **1kW** mechanical output power without gearing from battery voltage. Ideal for high performance electric bikes as well as servo and constant velocity applications such as pumps and fans.



| Motor Constants | Symbol | Unit | Value |
|---------------------|--------|-------------|-------|
| Voltage | Ke | V/krpm | 6.6 |
| Torque | Kt | Ncm/Amp | 6.2 |
| Damping | Kd | Ncm/1000rpm | 0.70 |
| Friction | Tf | Ncm | 6.5 |
| Terminal Resistance | I | Ohm | 0.18 |

| Motor Ratings | Unit | Value |
|---------------|-------|-------|
| Voltage | Volts | 36 |
| Current | Amps | 38 |
| Torque | Ncm | 210 |
| Speed | RPM | 4400 |
| Power | Watts | 1070 |



Sample design modifications

Shaft

- Round shaft
- Extra flats
- Length variants
- Cut gear
- Through shaft

Brushes

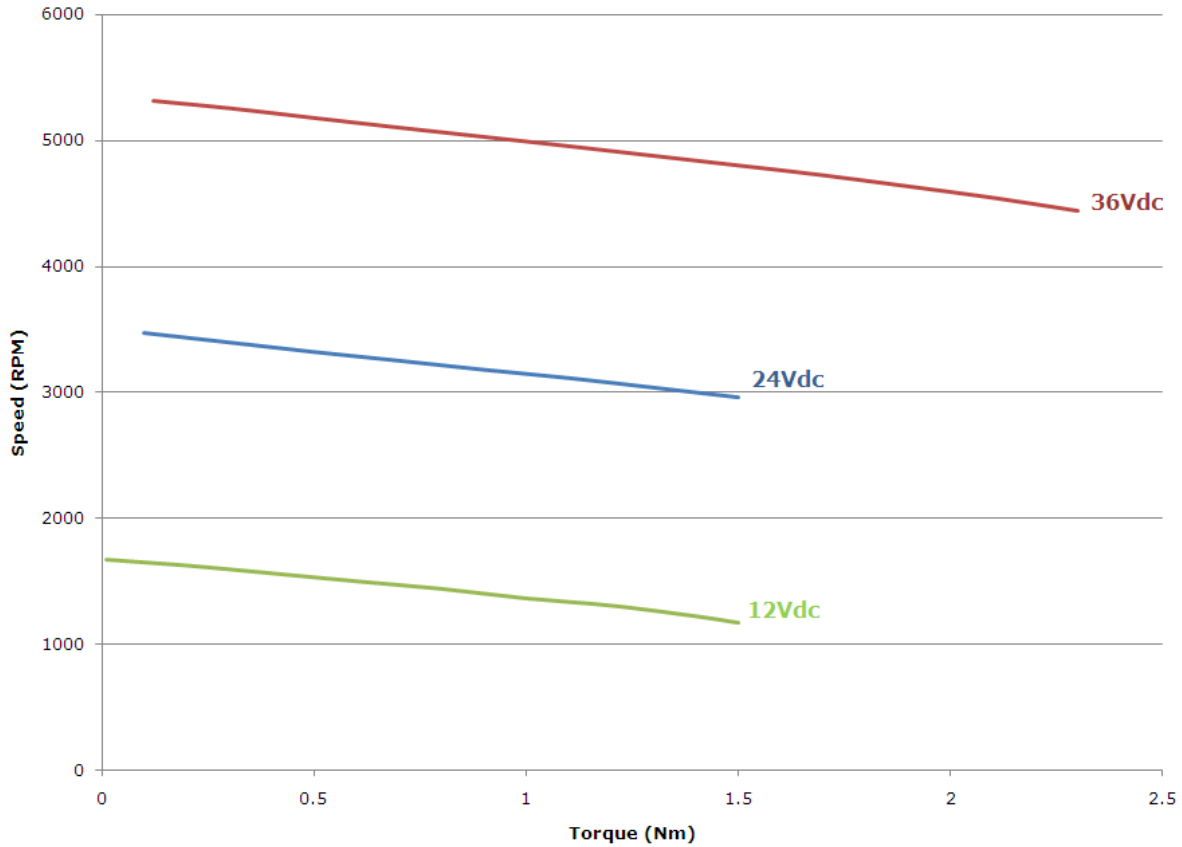
- Long life for continuous duty applications
- Low resistance brushes for servo applications
- High altitude applications
- Vacuum applications

Extra

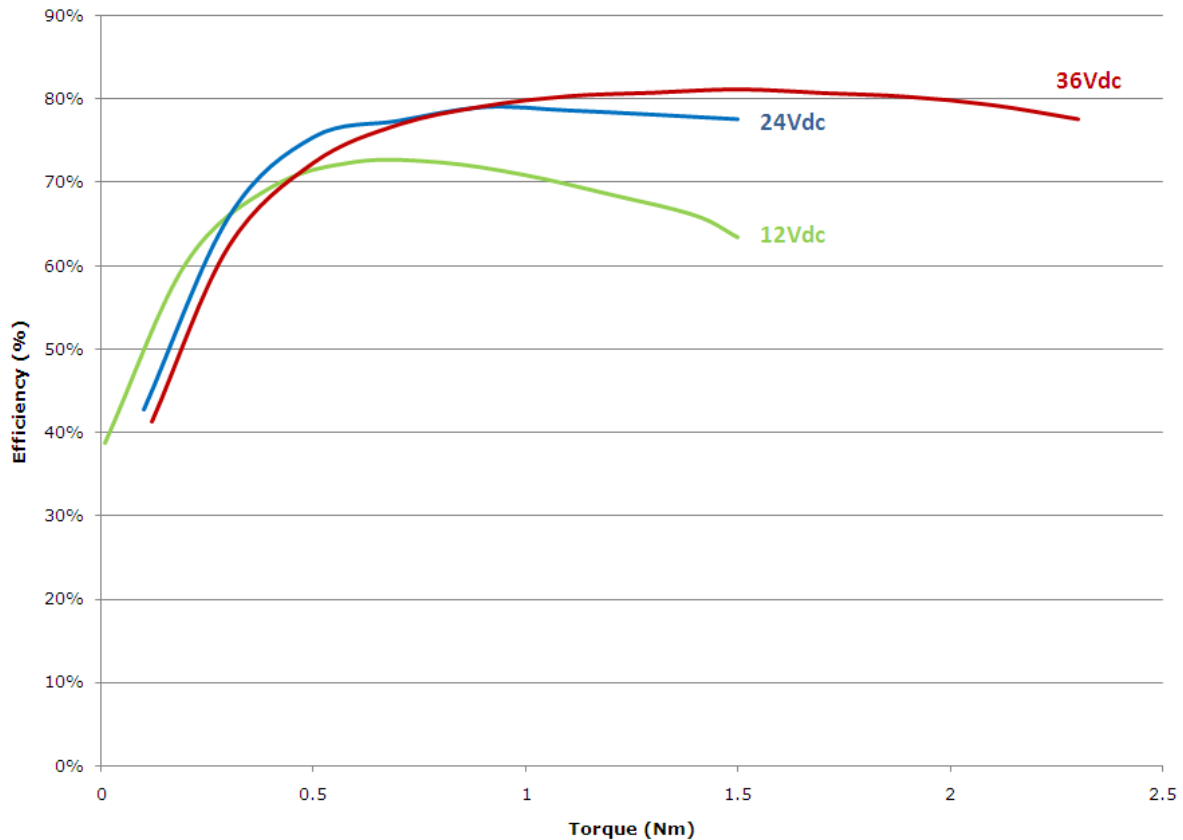
- EMC suppression
- Wiring looms
- Connectors
- Tri-rated cable
- Enclosure ratings up to IP68
- Encoders
- Adaptor plates



GSR-16FD-LR



NOTE: The angle of the Torque/Speed curve remains the same for higher and lower voltages. The speed varies proportionally from zero rpm relative to the voltage supplied. The stated voltages are an example, not a predefined maximum or minimum.



Due to ongoing product improvement data in this datasheet maybe subject to change without notice.